



 **Bologna**  
**Fiere**

**BOLOGNAFIERE REOPENS IN SAFETY.**

Tools, support and activities for the restart



## CURRENT REGULATIONS

---

During the Covid-19 emergency the regulations have passed through various evolutions. A number of decrees have been issued that regulate the various economic and social activities. The Reopening Decree of 22 April 2021 finally scheduled the resumption of activities linked to the trade fair sector for **15 June 2021**.

ORDER 28 May 2021 Adoption of the "AEFI Regulatory Protocol for the containment of the spread of Covid-19 at exhibitions and trade fair events". (21A03452) (GU General Series n.135 of 08-06-2021)

The AEFI Regulatory Protocol for the containment of the spread of Covid-19 at exhibitions and trade fair events

ORDER 02 December 2021 Adoption of the "Guidelines for the resumption of economic and social activities". (GU General Series n.290 of 06-12-2021)



<https://www.salute.gov.it/portale/nuovocoronavirus/homeMobileNuovoCoronavirus.jsp>



## CURRENT REGULATIONS

Starting from January 10th and until the end of the emergency period in order to allow the event to run safely, anyone intending to access the areas where the exhibition takes place must have and show daily, at the accesses, the " Super" Green Pass, as required by the DECREE-LAW 30 December 2021, n. 229. Access with " Super" Green Pass, in line with AEFI provisions, is intended for all those who access the premises where it is held the event (visitors, exhibitors, congressmen, press, guests, suppliers, employees, etc.). This provision is also valid during the set-up and dismantling periods if, at the same time, the Exhibition Center is affected by an event open to the public \*. BolognaFiere organizes checks at all entrances and during activities to verify the presence and validity of this certification. For foreign operators and visitors only, in the event of an expired Green Pass (from vaccination or recovery) or vaccination with unrecognized EMA vaccines, it is possible to access with an antigenic (valid for 48 hours) or molecular (valid for 72 hours) negative swab.



### "Super Green Pass" is intended as :

- **Certification of proof of vaccine status.**  
This certification is valid for 6 months from the date of completion of the vaccination cycle primary and following the administration of the booster dose it is valid without additional booster doses if necessary.  
For vaccines that require a double administration, the vaccination is valid even from the 15<sup>th</sup> day after the administration of the first dose up to the date scheduled for completion of the primary vaccination cycle;
- **Certification of having recovered from Covid-19 infection.**  
This certification is valid for 6 months from the date of validity shown on the certificate of healing. In the case of healing subsequent to the completion of the primary cycle it has validity without the need for further booster doses.

\*Any concomitance with other events is indicated in the DUVRI published on the [pass.bolognafiere.it](https://pass.bolognafiere.it) website.

### For the "basic" Green Pass, in addition to the previous items, it is considered valid:

- **Certification showing a negative molecular or antigen test.**  
These certificates are valid for 72 and 48 hours respectively from the completion of the test.



# 1 GENERAL ORGANIZATION | VISITORS

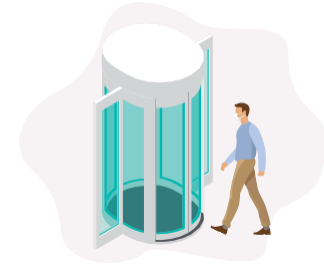
## ACCESS TO THE EXHIBITION CENTRE



- An increased number of **entrance points** for the public and socially **distanced queues with appropriate signs and markings**.



- Admission only for those **wearing facemasks**. Distribution and sale of facemasks on site for those without.



- **Green Pass check and temperature measured** using infrared camera-equipped gateways in full respect for privacy. Visitors with a body temperature **higher than 37.5° will not be admitted**.



- Maximum visitor numbers are determined based on the capacity of the spaces in order to **reduce crowding** and ensure personal distancing.



- **Increased use of digital** documentation: online named tickets with **overall checks on visitors** and registration of admissions for at least **14 days** after events in order to facilitate **contact tracing**.



# 2 GENERAL ORGANIZATION | THE EXHIBITION CENTRE

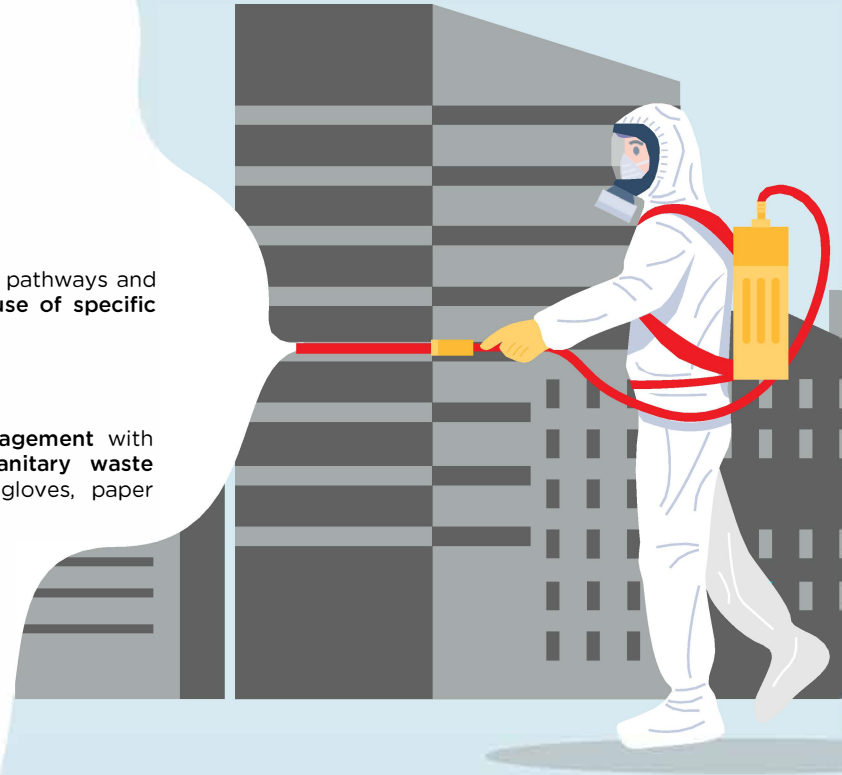
## SANITIZATION AND CLEANING

- Substantial attention paid to the sound maintenance of air conditioning/ heating systems.

An increased volume of outside air introduced in order to ensure an adequate renewal of the air and the total avoidance (if technically possible) of recirculating conditioned air, in order to avoid the potential transport of pathogens (bacteria, viruses, etc.).

- Sanitizing hand gel dispensers positioned in various points around the exhibition centre.

- Additional cleaning and sanitization of the bathrooms.
- Additional cleaning of the pathways and common areas with the use of specific sanitizing detergents.
- Differentiated waste management with the introduction of a sanitary waste category for facemasks, gloves, paper tissues and paper towels.

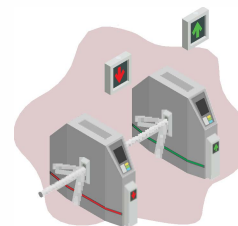
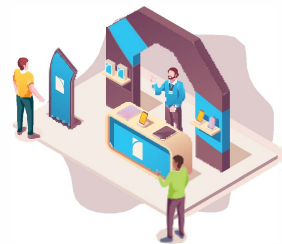




# 3 GENERAL ORGANIZATION | THE EXHIBITION CENTRE

## EXHIBITION CENTRE MANAGEMENT

- Service to check for crowding during the event.
- Large spaces will be used for the common areas and facilities. Lower stand density to increase the area available for movement and consequently increase distance between attendees.
- Positioning of appropriate signposts on the doors to different entry and exit points.
- Signs and notices in various languages explaining the behaviour to adopt (hand washing, distancing, etc.).
- Widening of pathways to enable social distancing.

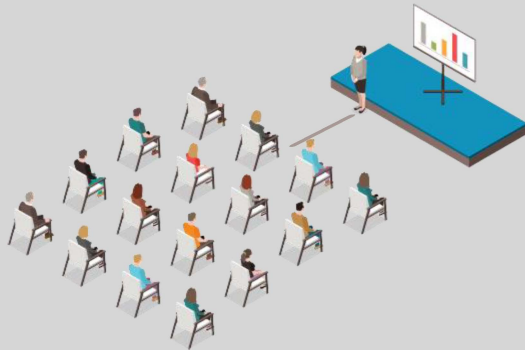




# 4 GENERAL ORGANIZATION | THE EXHIBITION CENTRE

## MANAGEMENT OF THE CONFERENCE ROOMS

- **Conference rooms** that ensure adequate safety standards
- To enable the speakers to talk **without having** to wear facemasks the distance between the table/podium and the front row will be extended
- **Devices and equipments** available to the speakers **will be sanitized** prior to and after initial use to protect against possible contamination.
- **Obligation for all attendees and staff to wear facemasks** and to follow the safety procedures such as frequently sanitizing hands.
- In meeting areas and meetings **prefer table of great dimensions and well placed spaced between their.**





# 5 GENERAL ORGANIZATION | THE EXHIBITION CENTRE

## FOOD AND DRINK

- An increased number of rest areas and bars to ensure distancing plus the creation of new islands for bars and restaurants.
- Prioritising the use of outdoor spaces for the consumption of meals.
- Customers will have to wear facemasks at all times if they are not sat at a table and will have to maintain a distance of at least 1 m between one another.
- From January 10th to access all bars and the restaurant areas, it will be necessary to possess the "reinforced" green pass. During the exhibition period it will not be necessary to show such certification for consumption, as already presented at the entrances to the Exhibition Center.

- Increased use of digital systems for restaurant services, for example: -online booking of restaurant spaces - booking of catering services or lunchboxes delivered direct to the stand.
- Prioritized use of electronic payment methods.

- Sanitizing products will be available for clients and staff also at the bars and cafes, in particular at entrances and near the toilets, which will be cleaned a number of times each day.
- It is possible to organize a buffet mode providing in any case, for customers and staff, the obligation of maintaining the distance and the obligation to use the mask. The self-service modality can be allowed with organizational modalities that avoid the formation of gatherings methods.
- The service staff who come into contact with clients will use facemasks and will frequently sanitize their hands with alcohol solutions.







# 6 GENERAL ORGANIZATION | THE EXHIBITION CENTRE

## EMERGENCY MANAGEMENT

The organization of a **Covid emergency plan** that also includes an adequate **medical first aid service** manned by appropriately trained staff and the constant presence of an ambulance during opening at audience of the most expected events

- **Shared protocol that regulates the organization with regards to Covid-19** and that includes an **emergency plan for immediate action in the case of symptoms traceable to Covid-19.**
- **Internal staff adequately trained** to implement the correct procedures.
- **A first aid point at the Service Centre** that is constantly active and the presence of **an ambulance** during opening at audience of the **most expected events.**



# 7 GENERAL ORGANIZATION | THE EXHIBITORS

## MANAGEMENT OF THE EXHIBITION SPACES

Each exhibitor, within the area of their own stand space, will enforce the rules and regulations concerning Covid-19 as the legally responsible party.



- It is possible to organize events and presentations at one's own stand through **online bookings** in order to **avoid crowding**.



- Design **criteria compatible with social distancing**, the sanitization of the spaces and the exchange of air in the hall (e.g. mesh ceilings) are favoured.



- Where possible, stands with **separate entrances and exits** are preferable.



- When setting up the stands, the use of **easily washable materials** and the organization of a **constant sanitization service** for the exhibited samples and the positioning of points for **distributing sanitizing gel** are recommended.



- **Distribution of gadgets: informative, promotional materials and gadgets** will be made available preferably in **self-service displays** (which visitors can access after **sanitizing their hands**) or using **digital systems**.



# 8 GENERAL ORGANIZATION | THE EXHIBITORS

## THE SETTING UP PHASE

During the set-up phase, access will take place from the entrance provided for by the Exhibition Regulations where the **validity of the "GreenPass" will be verified by checks** and it will be verified that the **body temperature is below the established limits**. Otherwise access to the exhibition center **will be denied**.



- Always **maintain social distancing of at least one meter** during the **setting up phases**, where technically possible.

- **Maintain the site area tidy and clean.**

- Also during the setting up phase, a **first aid service is present with specialized medical staff.**



# 9 GENERAL ORGANIZATION | THE EXHIBITION CENTRE

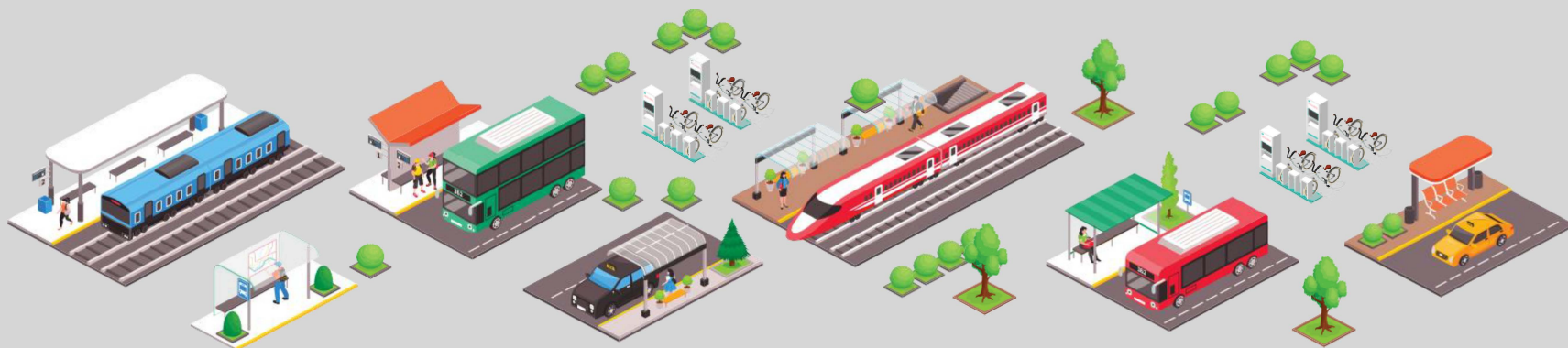
## OUTDOOR AREAS AND SERVICES

### SERVICES FOR MANAGING THE PUBLIC

During the events the service for the improved management of queues and the avoidance of potential overcrowding will be intensified.

### BIKE SHARING & CAR SHARING

Bologna also offers a number of alternative transport systems located near the exhibition centre.





**Thank you for your attention**

The document has been compiled on the basis of the legislation in force as of **February 22th** , 2022.  
Should variations of the same legislation become available, the document will be updated.